

Standard pressure gauge with improved strength and contact adapter

Model 111.20+EM

Data Sheet CW 2.19

Application

Pressure gauges for pressure measurement and control of liquid flow and non-combustible copper alloy inert gas flow, producing no congestion in pressure systems.

For use in:

- heat engineering equipment and installations
- control rooms of industrial processes

Special Features

Requirements

PN - 82 / M - 42322

Case diameter

100, 160 mm

Accuracy class

1.6

Measuring range

0...0.6 to 0...600 bar
or in other pressure/vacuum measurement units

Process connection

100, 160 mm - M20x1.5; G1/2; G3/8; 1/2 NPT
Radial

Temperature

Ambient: - 25 ... + 60 °C
Medium: maximum + 60 °C

Temperature error

Additional temperature error when temperature value of measuring element deviates from +20 °C
Ascending temperature: +0.3%/10K of real indication range.
Descending temperature: -0.3%/10K of real indication range



Pressure gauge Model 111.20 with contact adapter

Ingress protection

IP 50

Measuring element

Material:
< 60 bar Bourdon spring
> 60 bar helical spring

Mechanism

Brass

Dial

Aluminium - white

Housing

Black painted steel with explosion-proof protection

Window

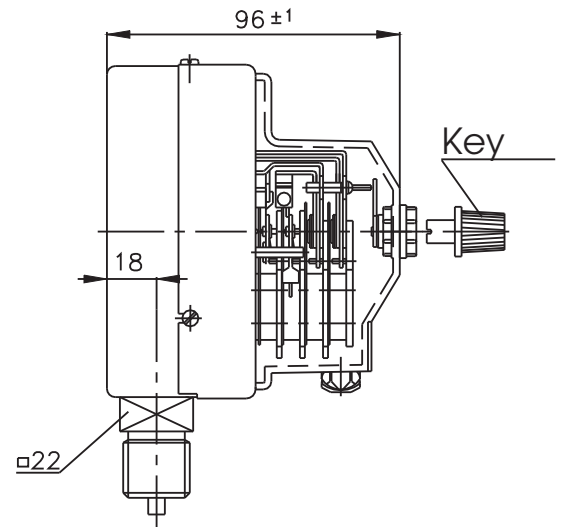
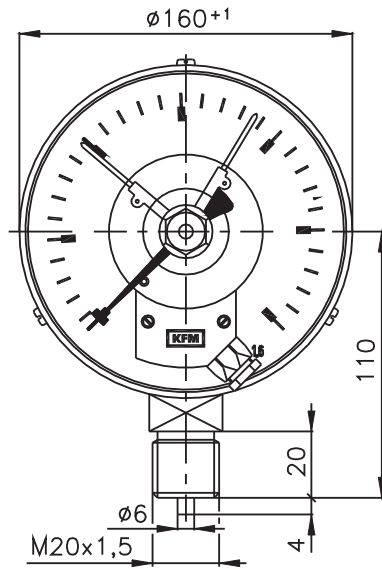
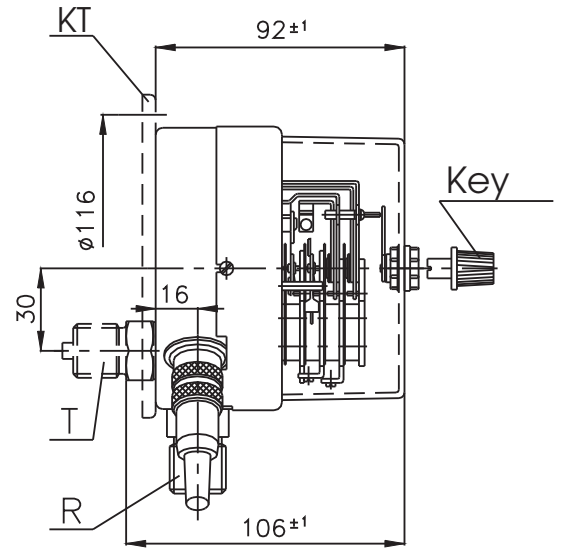
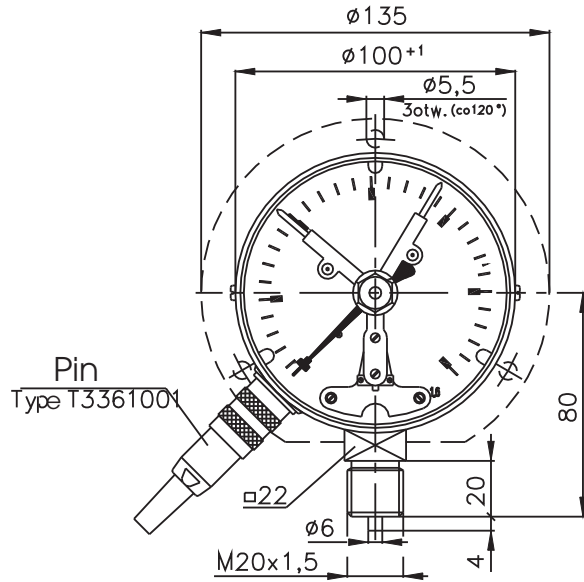
Plastic

Cover

Black painted steel

Non-standard options

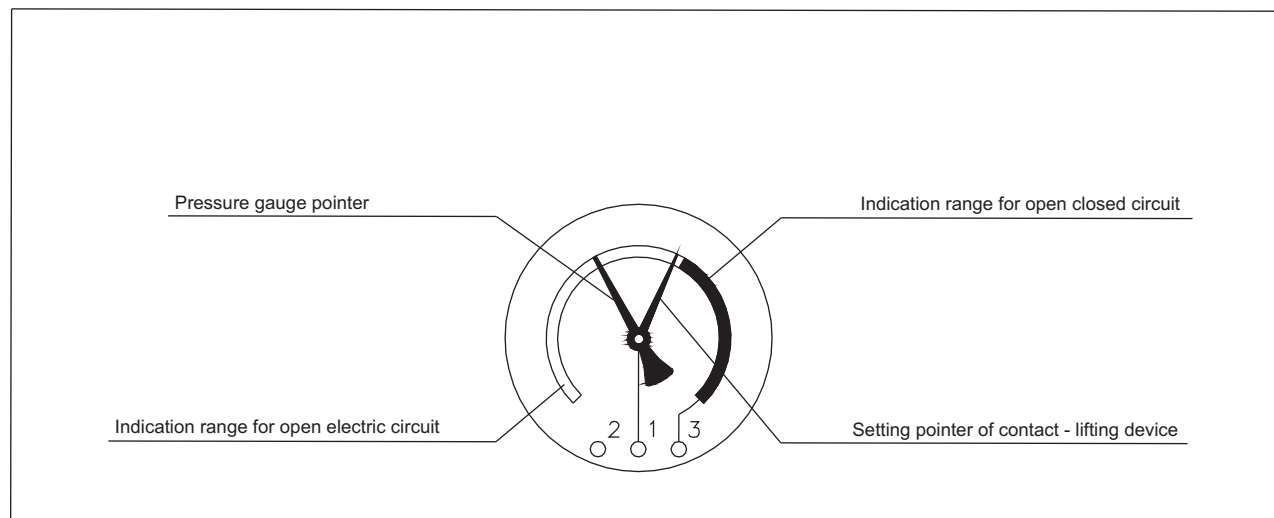
- front flange
- back flange
- pressure absorber



Ordering information

Model / Diameter / Indication range / Process connection / Accuracy class / Additional options

Contact - lifting device designation Contact - lifting	Number of connected signal circuits	Connection diagram	Operation	Contact - lifting device designation Contact - lifting	Number of connected signal circuits	Connection diagram	Operation
EZ1-1F EM1-1F Or EZ2-2F EM2-2F	1		With pressure increase, pair of contacts closes electric circuit the moment the main pointer exceeds pressure setpoint.	EZ5-1F EM5-1F Or EZ5-2F EM5-2F	2		With pressure increase, first pair of contacts opens electric circuit the moment the main pointer exceeds first pressure setpoint. With pressure increase, second pair of contacts closes electric circuit the moment the main pointer exceeds second pressure setpoint.
EZ2-1F EM2-1F Or EZ2-2F EM2-2F	1		With pressure increase, pair of contacts closes electric circuit the moment the main pointer exceeds pressure setpoint.	EZ7-1F EM7-1F Or EZ7-2F EM7-2F	2		With pressure increase, first pair of contacts opens electric circuit the moment the main pointer exceeds first pressure setpoint. With pressure increase, second pair of contacts closes electric circuit the moment the main pointer exceeds second pressure setpoint.
EZ3-1F EM3-1F Or EZ3-2F EM3-2F	2		With pressure increase, first pair of contacts opens electric circuit the moment the main pointer exceeds first pressure setpoint. With pressure increase, second pair of contacts closes electric circuit the moment the main pointer exceeds second pressure setpoint.	EZ9-1F EM9-1F Or EZ9-2F EM9-2F	2		With pressure increase, first pair of contacts opens electric circuit the moment the main pointer exceeds first pressure setpoint. With pressure increase, second pair of contacts closes electric circuit the moment the main pointer exceeds second pressure setpoint.



Contact-lifting device data maximum voltage of contacts.

- for direct current **220V**

- for alternating current for **100 mm diameter -220V,50Hz; for 160 mm diameter 380V, 50Hz**

Value of maximum voltage of current in contacts may be **1 A**

Ordering information

Model / Diameter / Indication range / Process connection / Accuracy class / Additional options



WIKA Polska S.A.

Ul. Łęgska 29/35, 87-800 Włocławek

Phone: (+48) 54 23 01 100

Fax: (+48) 54 23 01 101

E-mail info@wikapolska.pl

www.wikapolska.pl