



improve your life

eco friendly



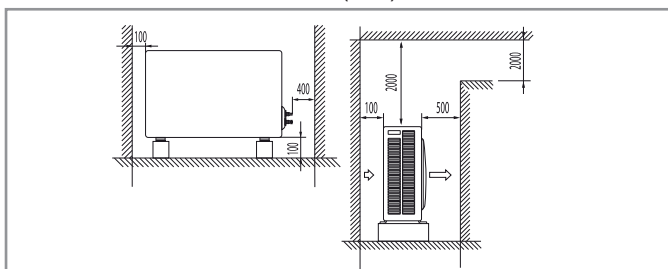
AEI1G80EMX mono and three phases

Extreme flexibility between residential and commercial

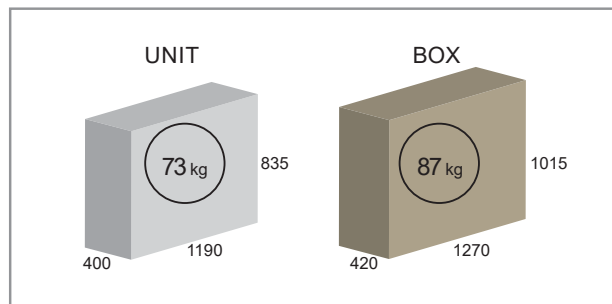
AEI1G80emx is an outdoor unit for border applications between residential and small service sector complexes. With its thermal power, the compact size of a mono fan structure, the possibility of creating mono, dual, tri and quadri split systems and the simultaneous production of domestic hot water, AEI1G80emx is the perfect solution to use as a primary heating system, able to offer an air-conditioning service all year long, with an air and/or water unit, underfloor panel heaters or low temperature radiators, flexible ducting and hot water heated with the renewable energy of the AEI1G80emx heat pump.

No less important is the possibility of installing up to four eMix units, dedicating AEI1G80emx just to producing large quantities of domestic hot water for hotels, schools, factories, the availability of the version for three-phase power supply and the multiple opportunities offered for applications in the service sector with cassettes, ductable units, slim ducted for hotel, SDHV flexible ductable units.

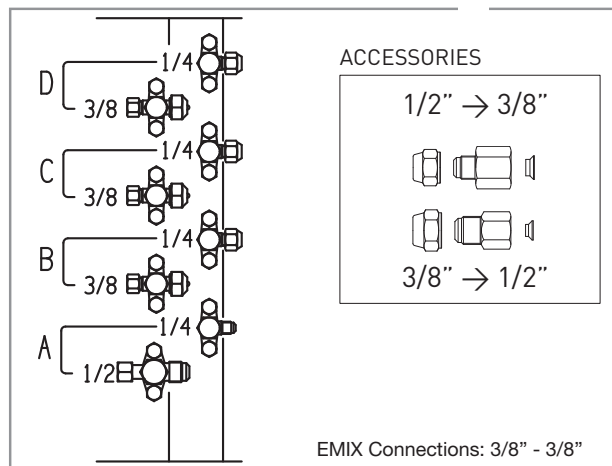
MINIMUM OPERATION AREA (mm)



DIMENSIONS (mm)



GAS CONNECTIONS



EXTENDED RANGE

-32°C | +50°C

UPDATE

FLASH MEMORY

CONNECTION

WEB CONTROL

AIR / AIR

ERP Ecodesign - EN14825

COOLING +35°C	Pdesignc	kW	9,0	A++
	SEER		6,7	
HEATING Average -10°C	Pdesignh	kW	7,7	A+
	SCOP		4,1	

ERP Ecodesign - EN14825 - Part Load

	35°C	30°C	25°C	20°C	12°C	7°C	2°C	-7°C	TOL
kW - kW	8,97	6,70	4,26	2,88	1,32	2,66	4,08	6,78	4,93
EER - COP	3,74	6,13	8,03	7,91	4,94	4,97	4,34	2,45	1,74

COOLING

CAPACITY kW

EER

+35°C UE / 27/19°C UI	Max	9,6	3,74
-----------------------	-----	-----	------

HEATING

CAPACITY kW

COP

+12/11°C UE / +20°C UI	Max	11,6	3,55
+7/6°C UE / +20°C UI	Max	11,2	3,27
+2/1°C UE / +20°C UI	Max	6,1	2,36
-7/-8°C UE / +20°C UI	Max	6,8	2,45
-10/-11°C UE / +20°C UI	Max	6,5	2,36

UNI 11300-4 - Full load maximum power

AIR / WATER

AEI1G80EMX+HKCE

EN14511

COOLING +35°C

Max

Nom

Capacity @ 18/23°C	kW	8,0	7,1
EER @ 18/23°C		4,01	4,10
Capacity @ 7/12°C	kW	6,9	5,0
EER @ 7/12°C		2,84	2,90

ERP Ecodesign - EN14825

LOW - 35°C Average -10°C	Pdesignh	kW	7	A++
	η	%	157	
MEDIUM - 55°C Average -10°C	Pdesignh	kW	6	A+
	η	%	117	

ERP Ecodesign - EN14825 - Part Load

35°C

55°C

	12°C	7°C	2°C	-7°C	TOL	12°C	7°C	2°C	-7°C	TOL
kW	2,22	2,47	3,74	6,24	4,24	2,15	2,07	3,08	5,11	3,50
COP	7,32	5,47	3,81	2,50	1,60	5,68	3,94	2,94	1,82	1,27

UNI 11300-4 (35°C) - Full load maximum power

EN14511

	12°C	7°C	2°C	-7°C	7°C	-7°C
kW	10,12	9,78	6,47	6,24	9,25	5,89
COP	3,95	4,04	2,74	2,50	4,12	2,70

DHW/Combi ERP
See Emix

MATCHINGS

- A + A + A + A
- A + A + A + B
- A + A + A
- A + A + B
- A + B + B
- B + B
- A + B
- A + C
- C

● Ideal matching with Emix/Emix Tank

Power supply	V/Ph/Hz	230/1/50-60 - 400/N3/50
Power Input (max.)	W/A	3300/15 - 5200/10x3
R410A standard refrigerant charge	kg	2,9
Compressor Type		Twin Rotary
Fan speed		Auto
Sound pressure (max.)	dB(A)	47

Liquid Pipe	mm(inch*)	6,35 (1/4")
Gas Pipe	mm(inch*)	9,52 (3/8") / 12,77 (1/2")
Total length of pipes (standard load)	m	Multi 40 / Mono 30
Total length of pipes (additional load)	m	Multi 65 / Mono 50
Pipe length per unit (standard load)	m	30
Pipe length per unit (additional load)	m	30
Maximum height difference (total)	m	10
Maximum height difference (between indoor units)	m	5

