



**eco**  
friendly

# AEI 1G 65 EMX mono and three phases

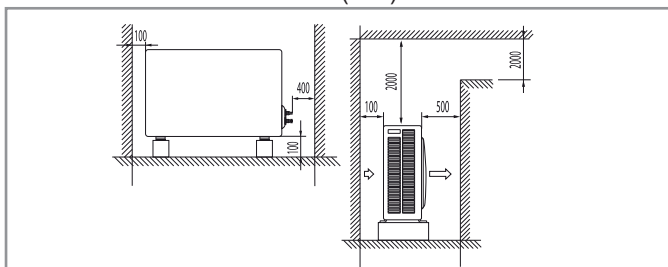
## Multisplit, Monosplit Package and always DHW

AEI1G65emx, is a mono/dual/trial connections, compact size with the possibility of connecting an eMix or eMix tank, is suitable to create a wide range of summer and winter air-conditioning solutions, with or without domestic hot water production, in small family homes, residential flats or offices as well as in restaurants, shops and small stores.

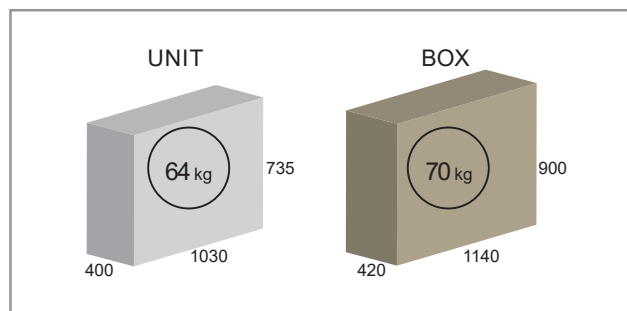
All the types of indoor units of the iSeries range are recognised and may work in single, multiple and mixed mode.

AEI1G65emx is very flexible in the mixed air/air configurations with air/water, allowing the installation of underfloor heating systems or low temperature radiators, at the same time as any type of direct expansion indoor units (wall mounted, floor/ceiling mounted, consoles, cassettes, ductable) and obviously the SDHV units with sound-proofed flexible ducting to reach every corner of the building, bathrooms and kitchen included. Worth remembering is the possibility of multi configuration with eMix and eMix tank units for the creation of cluster application suitable for the production of domestic hot water only.

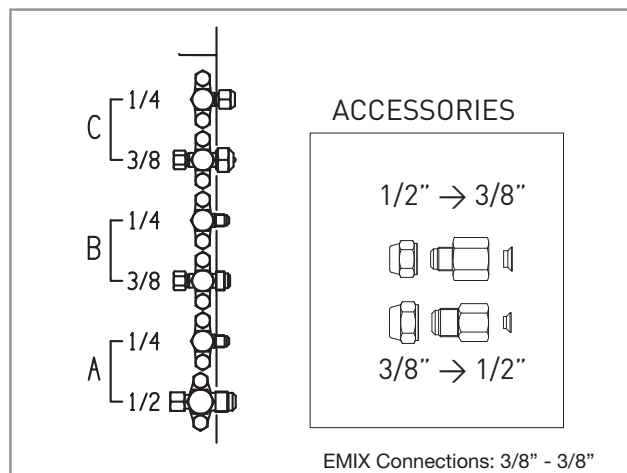
### MINIMUM OPERATION AREA (mm)



### DIMENSIONS (mm)

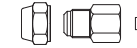
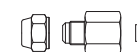


### GAS CONNECTIONS



### ACCESSORIES

1/2" → 3/8"



3/8" → 1/2"

EMIX Connections: 3/8" - 3/8"

**EXTENDED RANGE**

**-32°C | +50°C**

**UPDATE**

**FLASH MEMORY**

**CONNECTION**

**WEB CONTROL**

## AIR / AIR

ERP Ecodesign - EN14825

COOLING +35°C	Pdesignc	kW	6,5	A++
	SEER		6,5	
HEATING Average -10°C	Pdesignh	kW	6,4	A+
	SCOP		4,0	

ERP Ecodesign - EN14825 - Part Load

	35°C	30°C	25°C	20°C	12°C	7°C	2°C	-7°C	TOL
kW - kW	6,50	4,99	3,30	2,43	1,41	2,26	3,70	5,92	4,26
EER - COP	3,75	5,67	7,39	9,02	4,59	4,83	4,12	3,09	1,84

COOLING

CAPACITY kW

EER

+35°C UE / 27/19°C UI	Max	7,7	3,32
-----------------------	-----	-----	------

HEATING

CAPACITY kW

COP

+12/11°C UE / +20°C UI	Max	9,1	3,50
+7/6°C UE / +20°C UI	Max	8,7	3,22
+2/1°C UE / +20°C UI	Max	5,6	2,94
-7/-8°C UE / +20°C UI	Max	5,9	3,09
-10/-11°C UE / +20°C UI	Max	5,3	2,25

UNI 11300-4 - Full load maximum power

## AIR / WATER

AEI1G65EMX+HKCE

EN14511

COOLING +35°C

		Max	Nom
Capacity @ 18/23°C	kW	6,0	5,2
EER @ 18/23°C		3,60	3,78
Capacity @ 7/12°C	kW	5,2	4,6
EER @ 7/12°C		2,58	2,65

ERP Ecodesign - EN14825

LOW - 35°C Average -10°C	Pdesignh	kW	6	A++
	η	%	156	
MEDIUM - 55°C Average -10°C	Pdesignh	kW	4	A+
	η	%	105	

ERP Ecodesign - EN14825 - Part Load

35°C

55°C

	12°C	7°C	2°C	-7°C	TOL	12°C	7°C	2°C	-7°C	TOL
kW	1,95	2,09	3,22	5,41	2,41	1,67	2,20	2,28	3,78	2,56
COP	7,57	5,61	3,63	2,64	1,24	5,46	4,07	2,44	1,82	1,30

UNI 11300-4 (35°C) - Full load maximum power

EN14511

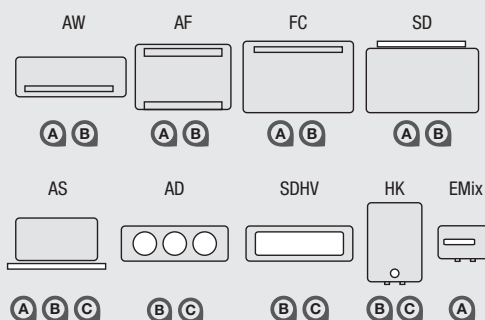
	12°C	7°C	2°C	-7°C	7°C	-7°C
kW	9,00	8,55	5,76	5,41	8,22	5,21
COP	4,48	4,13	2,93	2,64	4,14	2,80

DHW/Combi ERP  
See Emix

## MATCHINGS

- A + A + A
- A + A + B
- B + B
- A + B
- A + A
- B
- C

● Ideal matching with Emix/Emix Tank



Power supply	V/Ph/Hz	230/1/50-60 - 400/N3/50
Power Input (max.)	W/A	2600/12 - 5200/10x3
R410A standard refrigerant charge	kg	2.7
Compressor Type		Twin Rotary
Fan speed		Auto
Sound pressure (max.)	dB(A)	47

Liquid Pipe	mm(inch")	6,35 (1/4")
Gas Pipe	mm(inch")	9,52 (3/8") / 12,77 (1/2")
Total length of pipes (standard load)	m	Multi 30 / Mono 20
Total length of pipes (additional load)	m	Multi 45 / Mono 35
Pipe length per unit (standard load)	m	Dual 25 / Trial 20
Pipe length per unit (additional load)	m	Dual 30 / Trial 25
Maximum height difference (total)	m	10
Maximum height difference (between indoor units)	m	5